

600/32

PLAN OF

T U X F O R D

PREPARED BY AND THE PROPERTY OF

The Western Canada Fire Underwriters' Association

WINNIPEG, MANITOBA

87

AGENT'S ADVICE NOTE

THE WESTERN CANADA FIRE UNDERWRITERS'
ASSOCIATION

Date of Despatch 7/12/25 Reg. No. of Plan A/600/32

J. P. Machan, Esq.,

Tuxford, Sask.

Dear Sir:

I have the pleasure to send you an Insurance Plan of

Tuxford, Iss. 1923,

per Parcel Post,

for the purpose of reference to the similar copies that are in use at the Head Offices of the Insurance Companies represented by you as their Local Resident Agent.

Kindly sign and return the accompanying acknowledgment, that I may know you have received the Plan safely.

Yours truly,

A. H. S. STEAD,

Secretary-Treasurer,
W.C.F.U.A., Winnipeg, Man.

N.B.—This Plan is the property of The Western Canada Fire Underwriters' Association, and is loaned without charge to you, and is not transferrable without their acquiescence, the conditions being that you agree—

1. To keep the plan in good order and to prevent it from being torn or disfigured.
2. To use it solely for reference to subscribing companies.
3. To pay all express charges and postage when the Periodical Correction Slips are prepared, or when necessary to exchange it for a new edition.
4. To return it to The Western Canada Fire Underwriters' Association on request, or whenever you, from any cause, cease to represent companies, members of the Association.

No 12058

TUXFORD, SASK.

An Incorporated Village situated on the Outlook-Kerrobert Branch of the Canadian Pacific Railway, 15 Miles North of Moose Jaw.

SURVEYED, JULY 1923

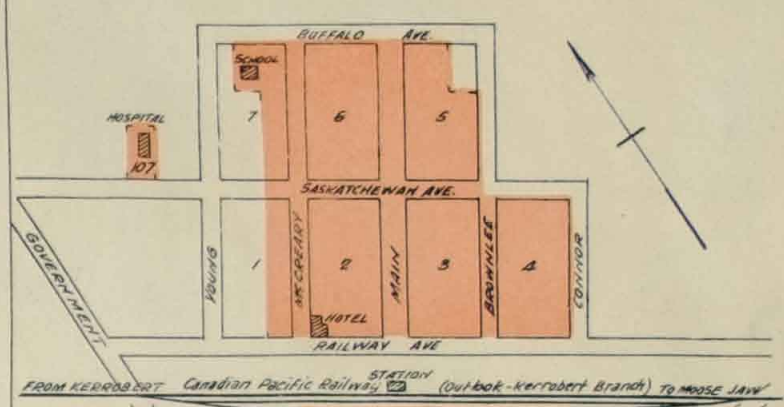
The Western Canada Fire Underwriters' Association

— REPORT —

- POPULATION: 150
- FIRE BRIGADE: Volunteer, Unorganized.
- APPARATUS: 1 Single cylinder chemical Engine, capd 60 Gals. 1 Double 12-28 Gal. Chem. Exting. distributed throuth town.
- FIRE ALARM: Fire Bell and 35 Telephones (Limited Service)
- MERCANTILE BUILDINGS: Lighted by electricity, Town Plant, Portable Gasoline Lamps, and kerosene.
- STREETS: Unpaved, Not Lighted.

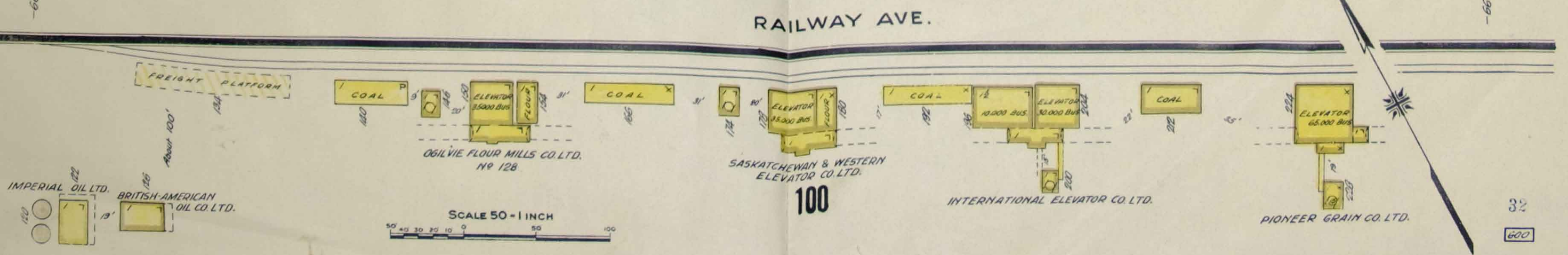
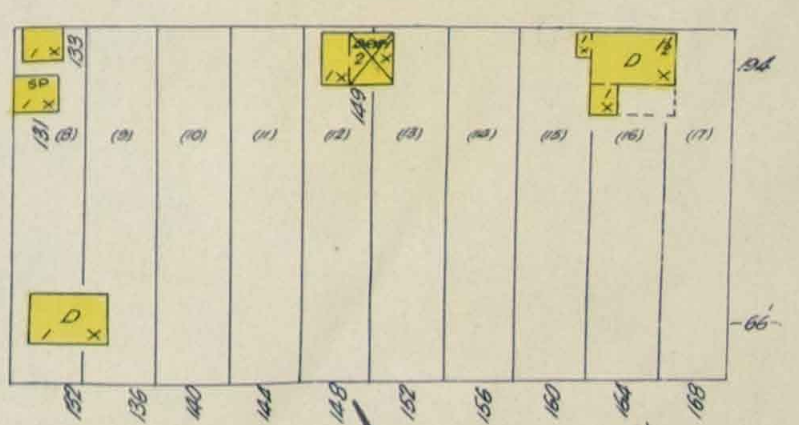
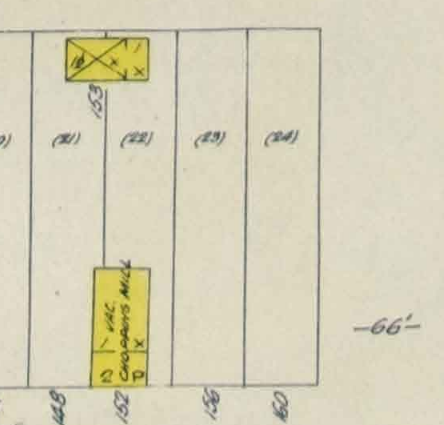
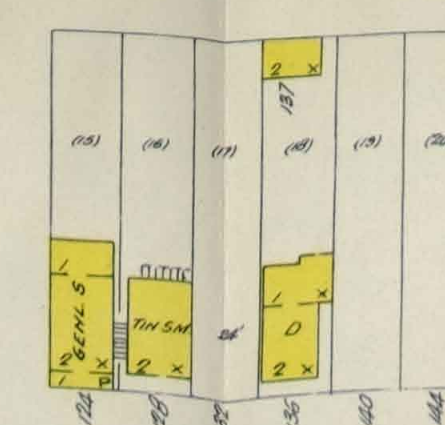
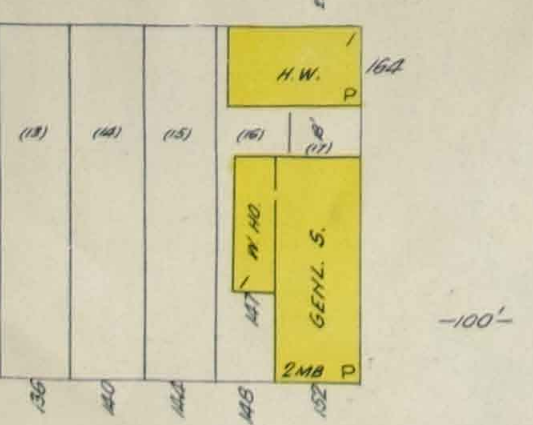
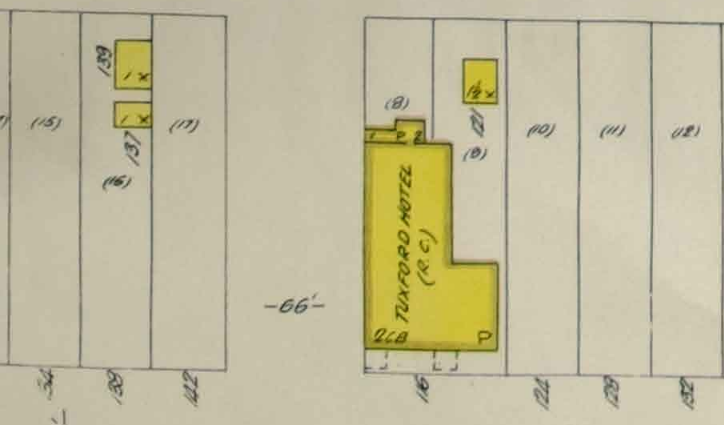
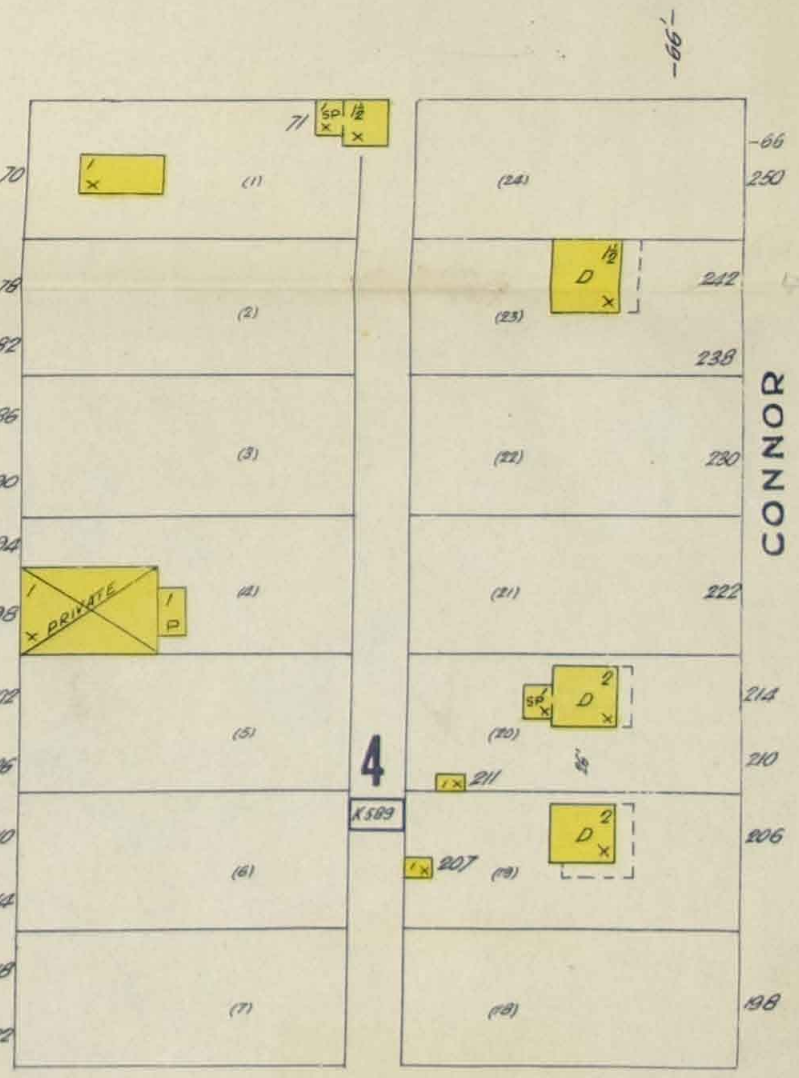
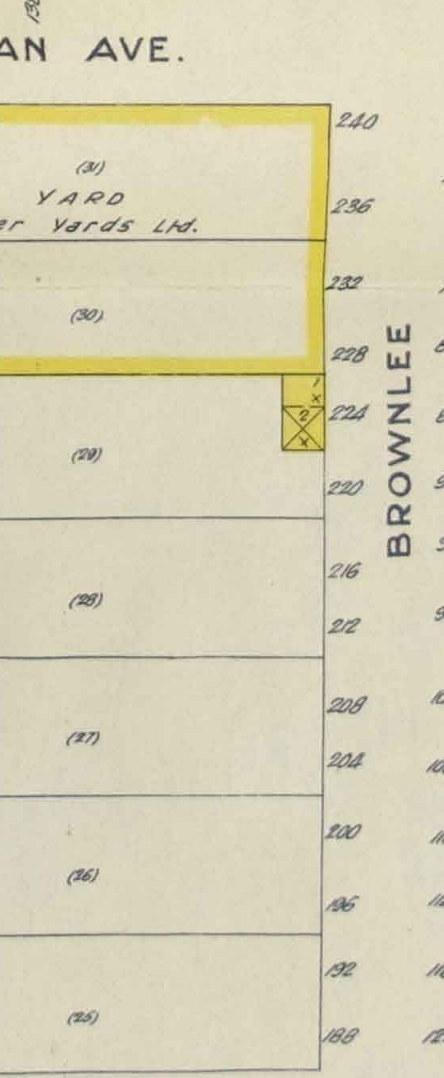
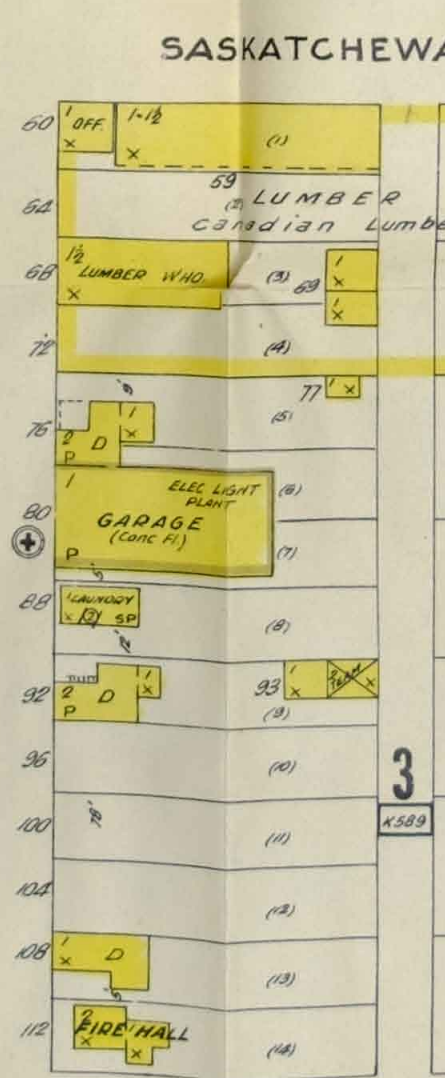
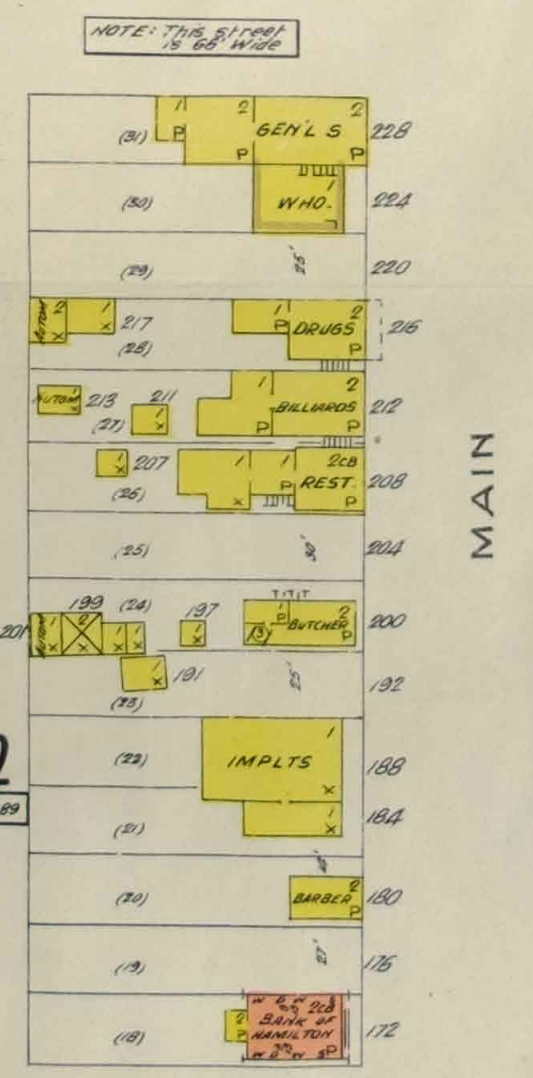
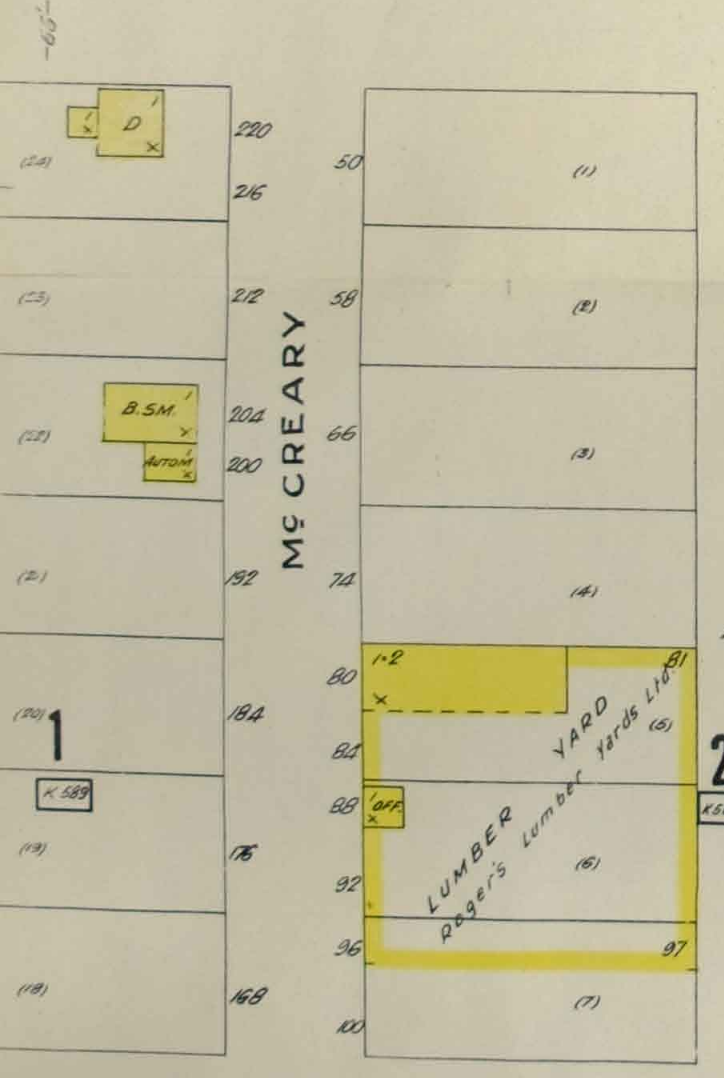
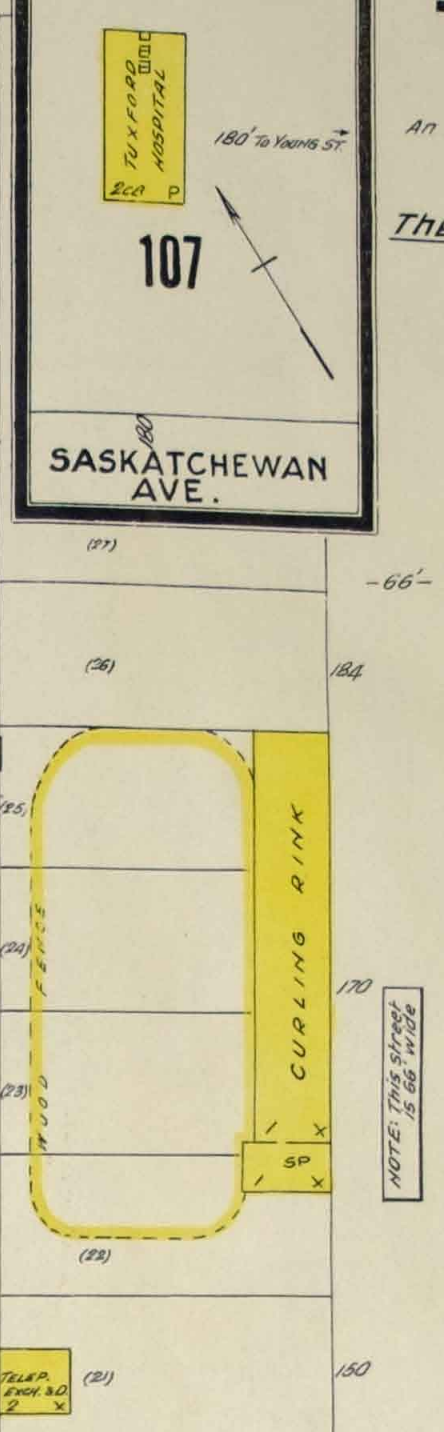
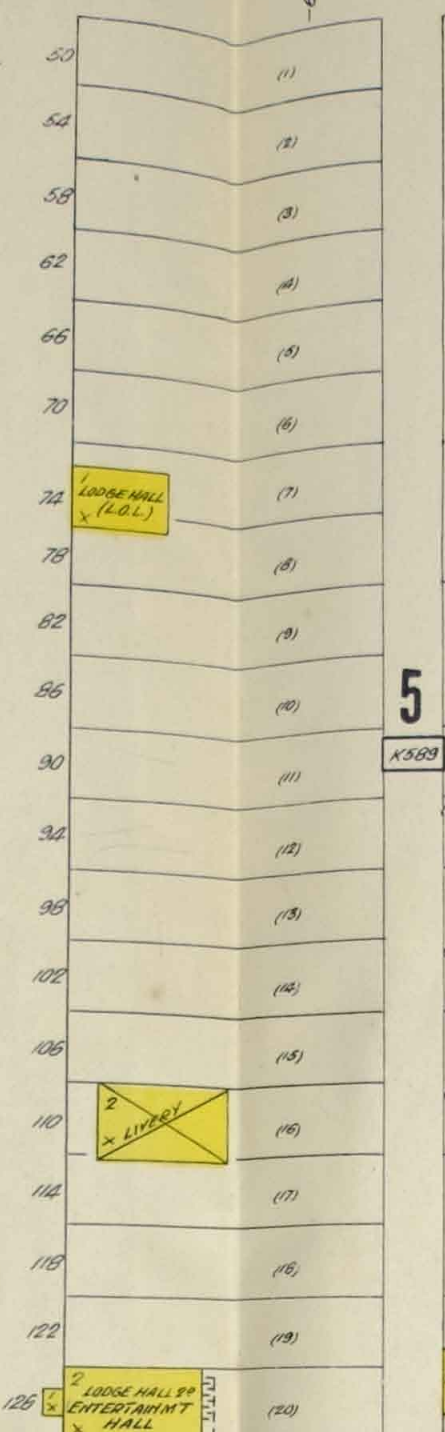
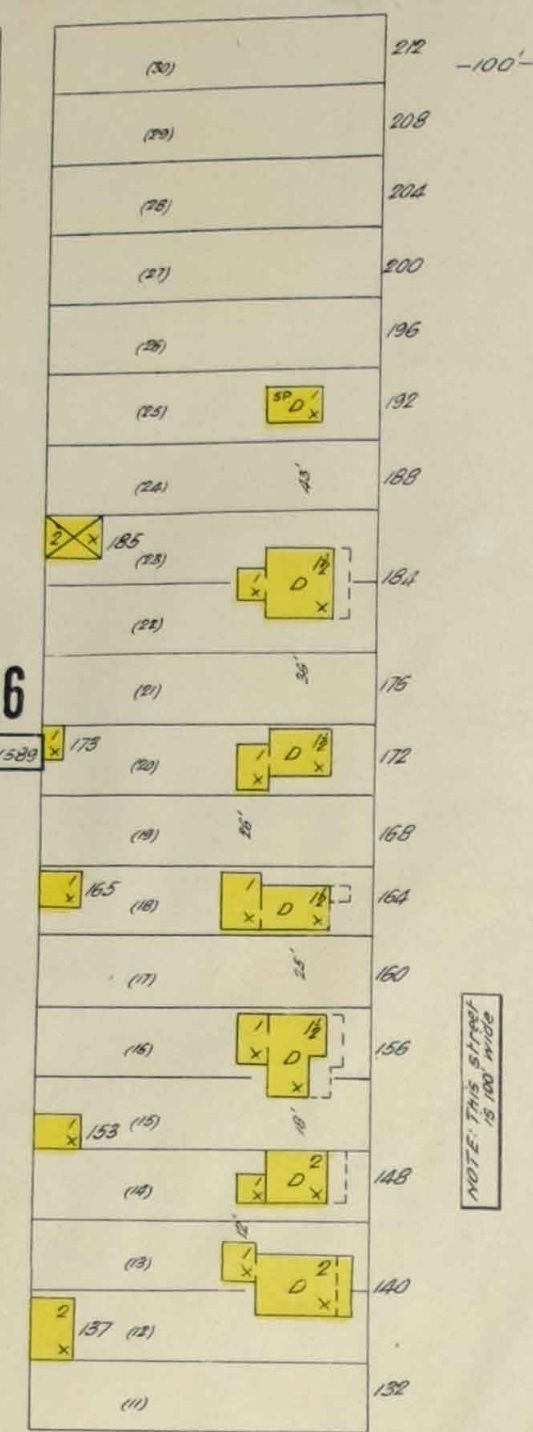
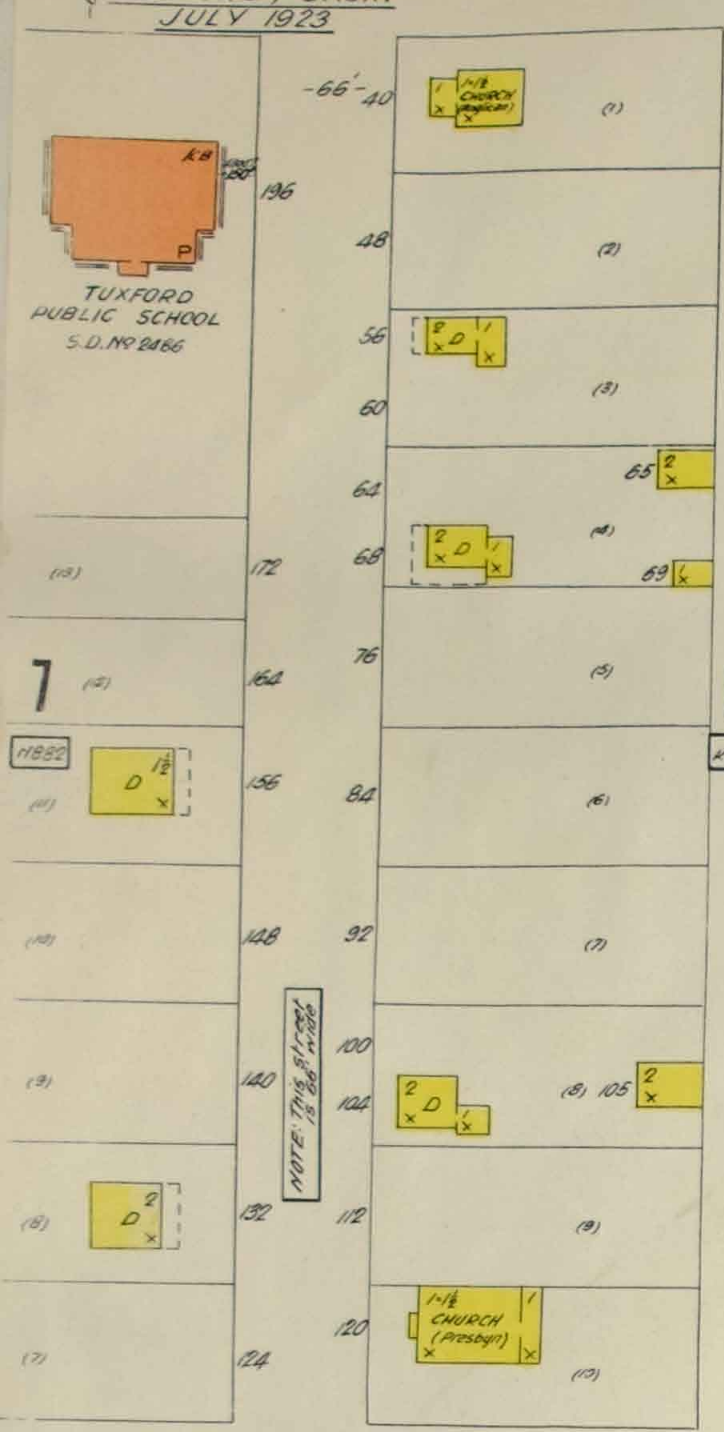
KEY PLAN

SCALE 1 INCH = 500 FT.



NOTE: NUMBERS UNDER 100 ARE LAND PLAN BLOCK NUMBERS. OTHERS ARE ARBITRARY.

SPACE FOR REVISION NOTES



SCALE 50 = 1 INCH

ADOPTED MARCH, 1922

KEY OF SIGNS

ADOPTED MARCH, 1922

TO THE INSURANCE PLANS OF THE WESTERN CANADA FIRE UNDERWRITERS' ASSOCIATION PLAN DEPARTMENT

CONSTRUCTION

- Brick Curtain Wall FIRE-RESISTIVE CONSTRUCTION Front Stone Trim Brick supporting wall
- MILL CONSTRUCTION Brick Walls
- BRICK Joist Construction 2 Stories and Stone Basement
- STONE Joist Construction
- CONCRETE Joist Construction
- CONCRETE BLOCKS Joist Construction
- BRICK VENEERED
- STONE or CONC. VENEERED
- BRICK or BRICK VENEERED 1st, Rough Cast, 2nd
- METAL FRAME Metal Clad
- FRAME Metal Clad
- FRAME Rough Cast
- FRAME
- BRICK with Frame Front and Light Well
- BRICK with Frame Structure on Roof 4 feet high
- PASSAGE or DRIVEWAY

ELEVATOR SHAFTS AND STAIRWAYS

- Brick or Conc. through Roof, or Sealed
- Plaster Tile, M. L. & P. or 2" Plank, enclosed with 2" Plank doors
- Board Enclosed or Open
- Trapped

WALLS

- Brick Wall to Roof Side Walls projecting through Roof, each Stroke indicates one foot when Two Walls adjoin highest Parapet only is shown
- Brick or Conc. Wall Unprotected Opening on 2nd Floor
- One Wall
- Two Walls
- Brick Wall with Frequent Openings
- Frame Partition (Grade Floor)
- Parapet Front or Rear
- Metal Cornice
- Parapet and Metal Cornice
- Parapet Heights on Building exposed on all Sides
- Exposure Distance
- Wooden Cornice Broken by Parapet Wall
- Continuous Wooden Cornice
- Conc. or Stone Party Wall

ROOFS

- Concrete (not covered with wood deck)
- Patent or Tar and Gravel
- Slate or Tile
- Asbestos or Non-Combustible Shingles
- Metal
- Wooden Shingles or Board Roof

- Mansard Two or More Sides
- Mansard One Side, Front Slate Covered, Rest Patent
- Roof Profiles Height of Building True to Scale

WINDOWS and DOORS

- Windows Reading from Left to Right Facing Building
- Wired Glass Windows in Metal Frames
- Standard Wired Glass Windows
- Number of Wired Glass Windows
- Non-Standard but Effective Shutters
- Standard Shutters
- Unprotected Opening in Bast.
- Effective but Sub-Standard Door, Hollow Steel Doors, Etc., or Standard Door Slightly Defective
- Standard Fire Door

SKYLIGHTS AND VENT SHAFTS

- Small Ordinary Skylight—Strokes denote openings in Floors under Skylight
- Small Standard Skylight
- Ordinary Skylight Lighting Top Floor only
- Ditto Lighting 2nd, 3rd and 4th Floors
- Standard Skylight Metal Frame & W.G.
- Brick Enclosed Vent Shaft
- R.C. or Board Enclosed Vent Shaft
- Brick or Concrete Chimney

MOTIVE POWER

- Open Horizontal Boiler
- Open Vertical Boiler
- Brick Enclosed Boiler
- Steam, Gas or Oil Engine
- 30 k.w. Dynamo
- 10 h.p. Electric Motor on 2nd Floor
- 12 h.p. Gas. Engine
- Turbine Wheel

OILS

- Oils
- Oils in Standard Containers
- Gasoline, Benzene, &c. not in Standard Containers
- Gasoline, Benzene &c. in Approved Containers drawn by Approved Pump. Sign indicates location of Pump, Tank inside Building
- Gasoline, Benzene, &c. in Approved Containers, Tank outside Building

PROTECTION

- Domestic Water Main
- High Pressure Water Main
- Proposed Main
- Public Hydrant with two Hose Connections and one Engine Connection
- High Pressure Hydrant with Three Hose Connections
- Proposed Hydrant
- Private Hydrant with two Hose Connections Hose and one Engine Connection
- Standpipe in Building
- Steam Fire Pump with Two Hose Connections
- Rotary or Centrifugal Pump
- Suction Pipe with Foot Valve and Strainer
- Check Valve, Water Flows in direction of Arrow
- Check Valve with Alarm Attachment
- Alarm Valve
- Water Meter
- Dry Pipe Valve
- Underground Valve Requiring Key to Open
- Post Indicator Valve
- Outside Stem and Yoke Valve
- Sprinkler Gravity Tank
- 10,000 Gallon Pressure Tank
- 5" Automatic Sprinkler Riser
- Automatic Sprinklers Throughout Section of Building
- Alarm Gong with Hood
- Siamese Steamer Connection
- Iron Fire Escape
- Iron Fire Escape with Outside Standpipe conn. each Floor and Roof
- Private Watchman Station No. 4 on 2nd Floor
- Private F. A. Box connected with Central Fire Hall
- Municipal Fire Alarm Box No. 10
- Automatic Fire Alarm System connected with Central Fire Hall
- Automatic Fire Alarm Self Contained

SIGNS ON STREETS

- Public Hydrant
- Municipal Fire Alarm Box No. 10
- Street Width
- Ground Elevation

SIGNS ON KEY PLANS

- Municipal Fire Alarm Box No. 47
- Public Hydrant
- High Pressure Hydrant
- Prominent Buildings
- Fire Hall
- Pumping Station
- Fire Limit
- City Limit

SECTION SIGNS

- Open Joist Roof
- Line of Eaves
- Sheathed Floor and Wall
- Plank or Timber or Mill Constructed Floor
- Brick Arched Floor
- Fire Proof Floor

ABBREVIATIONS

- A.S. Automatic Sprinklers
- B. Basement
- B.B. Brick Basement
- B.C. Brick Chimney
- T.C. Terra Cotta Chimney
- P.S.P. Protected Stove Pipe
- C.R.L. Cotton Rubber-lined Hose Dwelling
- D. Each Floor
- EA. Frame Bast.
- F.B. Metal Natural Gas Vent
- G.V. Hollow Tile
- H.T. Iron Chimney
- I.C. Metal Clad
- M.C. Metal Lath and Plaster
- M.L. Metal Lined
- M.B. Mud Basement
- M.L.&P. Metal Lath and Plaster
- M.L. Metal Lined
- M.B. Mud Basement
- No.A.S. No Automatic Sprinklers
- P.S. Perforated Pipe Sprinklers
- R.C. Rough Cast
- S. Store
- S.B. Stone Basement
- S.P. Unprotected Stovepipe
- W.G. Wired Glass
- W.H.O. Warehouse
- W.N. Wired Netting
- W'D'WS. Windows

- Small Lumber Pile
- Limit of Fuel or Lumber Yard
- Crossed Lines Indicate Stable

REFERENCE NUMBERS

ON REGULAR 50' AND 100' TO THE INCH
DETAIL SHEETS

ARBITRARY BLOCK NUMBER

2654

M 27
22
(27)

On Large Plans First Numeral Indicates Number of Volume (Vol. 2.) Taking off Last Numeral Leaves Sheet Number (Sheet 265)

LAND PLAN No.
LAND PLAN BLOCK NUMBER
LOT NUMBER

LEGAL REFERENCE

21
Municipal House No. Parallel to Street Line

101
Arbitrary House or Plan Number Perpendicular to Street line 100